

PROJECT PROFILE

Alexandra Palace
London



Sector: Education

Client: Kier Southern

Size: 500m²

**System: Built-up Felt
Roofing**

Project Overview

Originally constructed back in 1875, Alexandra Palace began life as a theatre, but today it hosts a huge range of public events including plays, live music, cinemas and banquets. On this 500m² flat roofing project, MAC Roofing contributed significantly towards the restoration of North London's most iconic listed building, with works including both refurbishment and new build aspects.

On this high profile project, MAC Roofing helped ensure that the right materials were specified and proactively changed the specification to Icopal from an alternative system that was initially put forward.

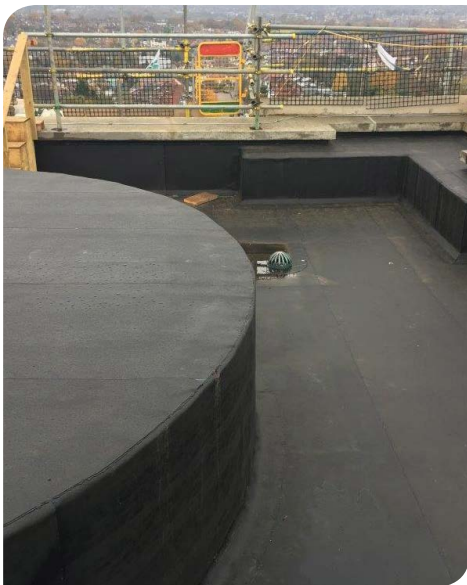
“Ensuring minimal disruption was essential as everyday activities needed to continue at Alexandra Palace whilst works progressed.”

The Solution

This project require intricate detailing to the existing roof where there was limited space to work in, so careful planning and first class workmanship was essential. MAC Roofing's operatives initially installed plywood to the exiting roof surface in order to create a suitable substrate onto which the subsequent warm roof system could be installed. The specified system included Icopal's Vapour Barrier, Icopal Tissue Faced Insulation and was finished with Icopal's innovative Universal membrane. The Universal build up was chosen due to its robust performance when compared with normal thermoplastic materials, and it also offered a better environmental performance that met the client's requirements. Universal's inherent flexibility also enabled MAC's operatives to cleaner, more aesthetically pleasing finish in the complex detailing areas.

In addition to the refurbishment works a new building was constructed between 2 listed walls which had to remain in place whilst the metal frame was built. From here, concrete planks were installed onto which Icopal's warm roof build up was applied incorporating a cut to falls system that was expertly and accurately designed.

Ensuring minimal disruption was essential as everyday activities needed to continue at Alexandra Palace whilst works progressed. Co-ordinating material deliveries in line with the restrictions of project site was also a challenge, given the nature of the building use.



MAC Roofing & Contracting Ltd

(Head Office) Unit 1, Lumina Business Park, Martindale Road, Bromborough, Wirral, CH62 3PT
T: 0151 346 2670 F: 0151 334 0796

(Southern Office) The Junction, Station Road, Watford, WD17 1ET
T: 01923 545 745

E: admin@macroofing.com W: www.macroofing.com

